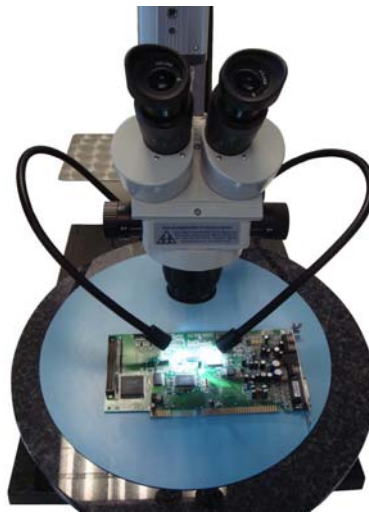


LED Gooseneck Illumination for Microscopes:



Upgrade your Lighting

The Optica CL-30 light is made up of a weighted base plate combining two long gooseneck flexible arms. At the end of each arm is a housing for the single source White LEDs. The base also includes the on/off switch and power socket.

Specifications:

Light Source:	White LED (x2)
Chromaticity Coordinates (x,y):	0.310, 0.320 (typical)
Luminous flux:	30 lm (typical)
Emission angle:	35°
Power Supply	12 v DC, 300mA

Uses of the Gooseneck Illuminator:

**Microscopy, Industrial, Electronics, Task Lighting,
Quality Departments, Engineering, General Inspection,
Microscope Upgrades, etc.**

Special Application Products Limited
Unit 5, Manor Lane, Manor Farm Business Centre, Manningtree Road, Stutton, Ipswich,
Suffolk, IP9 2TD

Tel + 44 (0) 1473 327732 Fax + 44 (0) 08701 400163
email sales@sapltd.co.uk www.sapltd.co.uk