



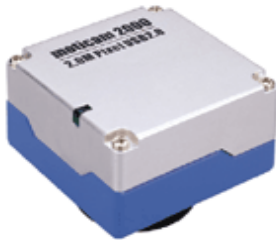
Special Application Products Ltd
Unit 5, Manor Farm Business Centre, Manningtree Road
Stutton, Ipswich, Suffolk, IP9 2TB
Tel:+44 (0)1473 327732 Fax:+44 (0) 8701 400163
E-mail sales@sapltd.co.uk Website: www.sapltd.co.uk

Motic M1000 Digital Camera



Attachable c-mount Camera 1/2" CMOS
1.3 Mega pixels (1280 x 1024) with USB 2.0 PC output
With 16mm CCD macro lens
and 28mm, 30mm, 34mm and 35mm eyepiece adapters
Calibration slide for image measurements
USB 2.0 PCI card - requires Windows 2000 / XP with P3 processor
Motic Images Plus 2.0 multi-language version

Motic M2000 Digital Camera



Attachable c-mount Camera 1/2" CMOS
2.0 Mega pixels (1600 x 1280) with USB 2.0 PC output
With 16mm CCD macro lens
and 28mm, 30mm, 34mm and 35mm eyepiece adapters
Calibration slide for image measurements
USB 2.0 PCI card - requires Windows 2000 / XP with P4 processor
Motic Images Plus 2.0 multi-language version

Motic M480 Dual Analogue / Digital Camera



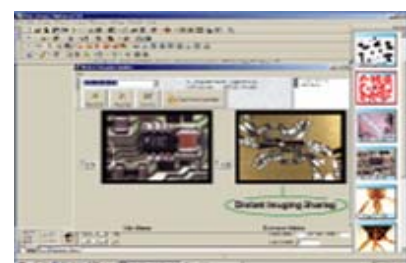
Attachable c-mount Camera 1/3" Sony CCD
420 Kilo pixels (640 x 480) / 480 TV line with dual output
USB1 / analogue
With 12mm CCD macro lens
and 28mm, 30mm, 34mm and 35mm eyepieces
Connecting cables : USB, RCA and S-Video
Switching power supply 100-240V (CE)
Calibration slide for image measurements
White balance control
Requires Windows 98 / ME / 2000 / XP with Pentium processor
Motic Images Plus 2.0 multi-language version

Motic Images Plus 2.0ML Software



Display real-time live images
for assembly, inspection and training
Capture and archive images
as single-shot still images
as time-lapse images
as video clips

Process images
adjust, enhance and improve images
annotate and highlight areas of interest
measure and record feature sizes





Special Application Products Ltd
Unit 1E, The Gattinets, Hadleigh Road
East Bergholt, Suffolk, CO7 6QT
Tel:+44 (0)1206 299334 Fax:+44 (0) 8701 400163
E-mail sales@sapltd.co.uk Website: www.sapltd.co.uk

1. Camera Installation Procedures

- 1.1 Install USB2 card and software if required to update from USB1.
- 1.2 Restart PC to retain USB2 port settings
- 1.3 Load camera software from CD-ROM
- 1.4 Remove CD and restart PC to retain software settings
- 1.5 Connect Motic camera to USB port and follow on-screen camera driver loading instructions

2. Camera Initial Start-up Procedures - M1000 / M2000

- 2.1 Open Motic Software from desk-top icon
- 2.2 Click on File at top of screen and select settings from drop down menu and exit
 - set capture window size to auto
 - set capture file to BitMap for best resolution for most applications
 - set camera driver to M1001/2001
- 2.3 Click on Camera icon on the top toolbar
 - live preview screen will open, set display and capture window sizes to suit requirements

3. Camera Initial Start-up Procedures - M480

- 3.1 Open Motic Software from desk-top icon
- 3.2 Click on File at top of screen and select Setting from drop down menu
 - set capture window size to auto
 - set capture file to BitMap for best resolution for most applications
 - set camera driver to dscapture
- 3.3 Click on camera icon on the top toolbar
- 3.4 Click on Options at top of DS capture screen
 - go to each video setting in drop down menu and change:
 - from NTSC to PAL setting and save
 - from composite to S-video and save
 - screen will then display live image

4. Calibration Procedure

- 4.1 Using calibration circle slide, save the largest circle image viewable at each microscope magnification setting:
 - ensuring the circle is in focus, sharp and black against white background
 - suggested make new calibration file and make each image file name include:
 - magnification setting, circle size in microns, capture window pixel size
- 4.2 Open Calibration Wizard from Measure drop down menu and follow circle calibration instructions:
 - open stored calibration circle file for first magnification setting stored calibration circle, call setting 1X, initiate calibration, on follow up screen choose own calibration title
 - repeat for each magnification setting, using 2X, 3X etc setting
- 4.3 Open Calibration Table from Measure drop down menu
 - click on each pre-stored calibration and delete, leaving new settings only